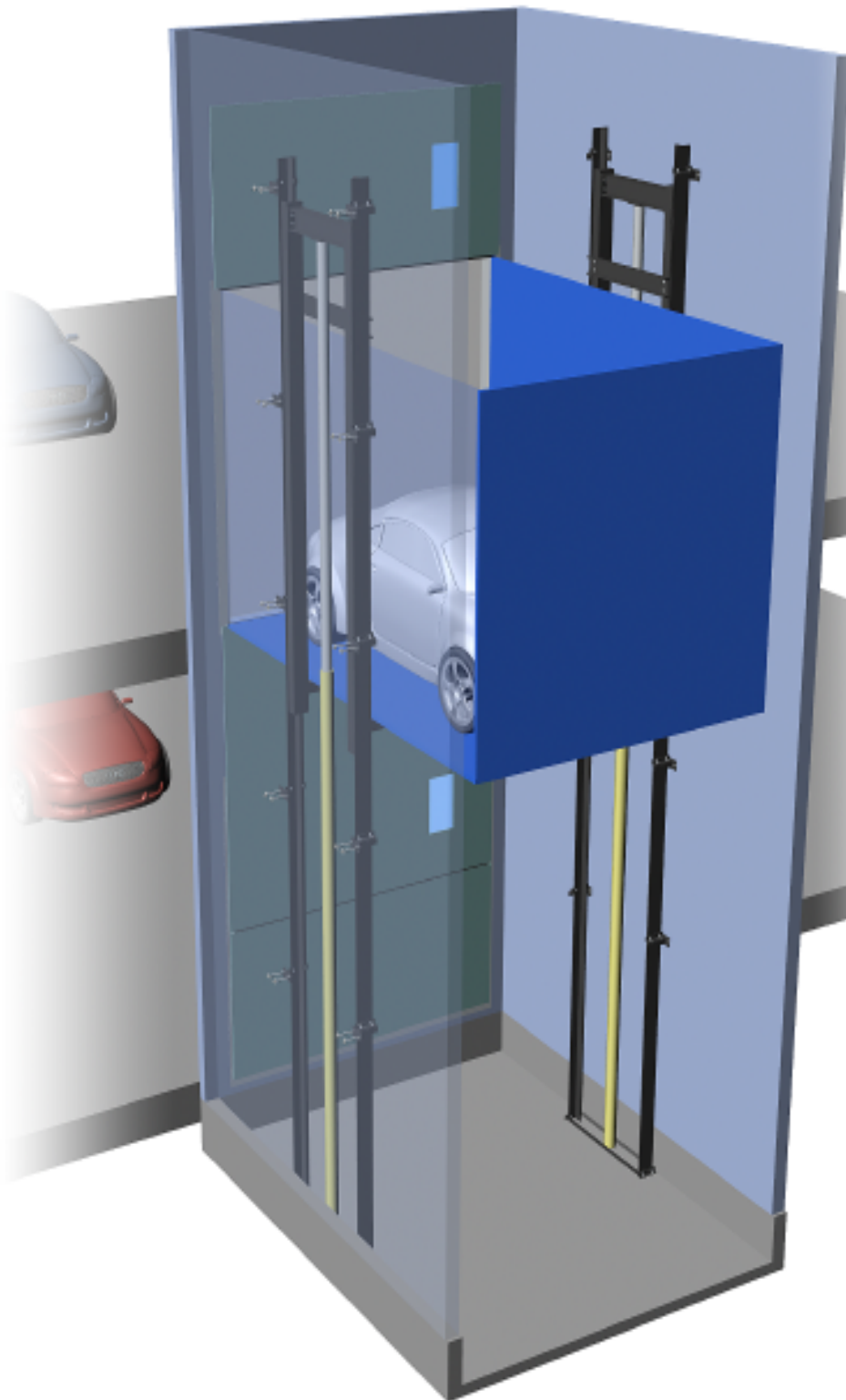
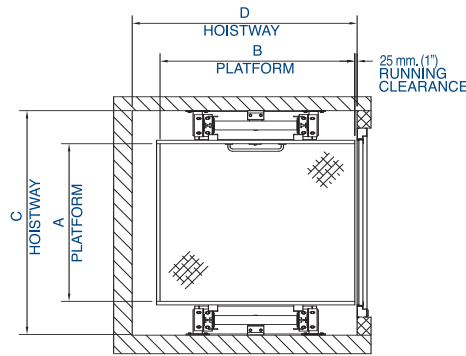
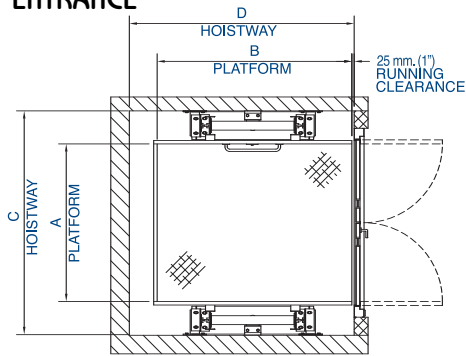


## AUTOMOBILE ELEVATOR

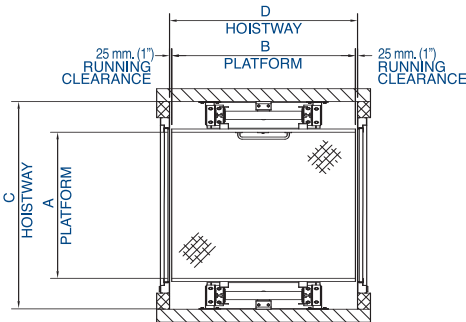
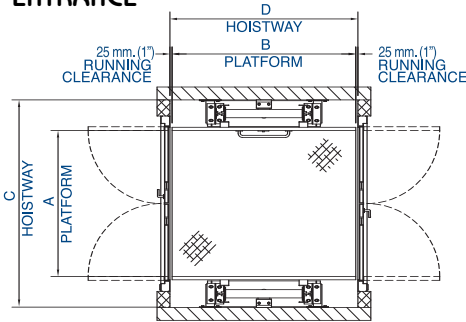


- dual hydraulic cylinders design
- environmentally friendly non-buried cylinders
- capacities from 6,000 lb. to 20,000 lb.
- operator controls on platform
- meets or exceeds elevator safety standard ASME A17.1 & CSA B44

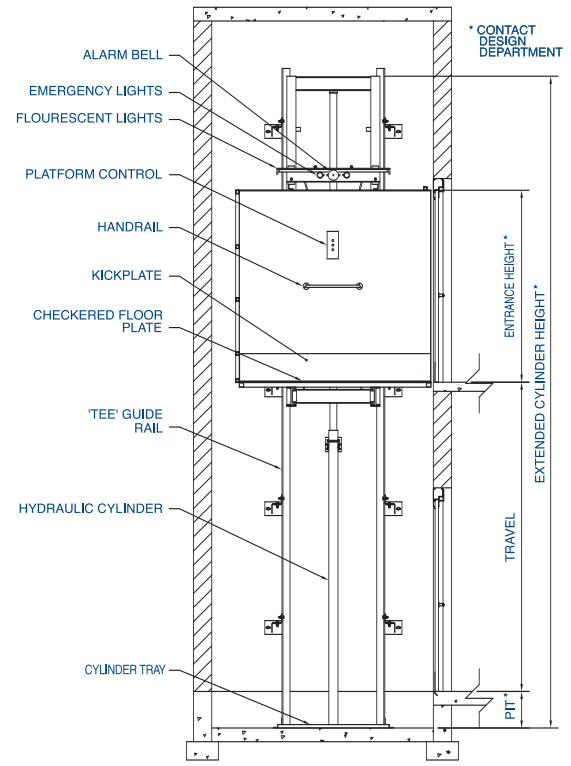
## IN-LINE ENTRANCE



## THROUGH ENTRANCE



PLAN VIEWS - SWING & VERTICAL BI-PARTING DOORS



SECTION VIEW

### SWING DOORS

	A	B	C	D
IN-LINE	3048 (120)	6096 (240)	3810 (150)	6350 (250)
THROUGH	3048 (120)	6096 (240)	3810 (150)	6146 (242)

### VERTICAL BI-PARTING DOORS

	A	B	C	D
IN-LINE	3048 (120)	6096 (240)	3810 (150)	6604 (260)
THROUGH	3048 (120)	6096 (240)	3810 (150)	6655 (262)

Dimensions tables refer to plan views. All measurements given in mm (inches).

# SPECIFICATIONS

- Design:** two side mounted direct coupled hydraulic cylinders  
two 'T' type guide rails with sliding guide shoes
- Capacity:** 2727 kg. to 9090 kg. (6,000 lb. to 20,000 lb.)
- Speed:** 0.15, 0.25 or more M/sec (30, 50 or more ft/min) maximum
- Travel:** to suit building height
- Operation:** continuous pressure pushbuttons or automatic
- Power unit:** 20, 30, 40 or more HP, 208, 230, 460, 575/3/60 TEFC motor, submersed screw pump, two-speed valve for smooth stops and starts
- Car construction:** 3/16" steel checkered floor plate, 14ga. x 84" high wall panels c/w 1/8" x 12" kickplate; expanded metal car ceiling; car top control; platform controls and handrail; car lighting; alarm bell and emergency lights; all steel painted 1 coat machine enamel
- Hoistway doors:** vertical bi-parting doors with single section/two section car gate at each entrance; doors provided with interlocking and 2 hrs. fire rating
- Options:** telephone cabinet; emergency power for loweing; two-stage hydraulic cylinder; 1-3/4" hollow metal swing door, 1.5 hr. rated; heavy duty ball bearing hinges (3 per door); interlocked so lift will not operate if door is open and door can not be opened unless platform is at the landing (some jurisdictions restrict the use of swing doors); 96" high entrance; solutions for habitable space below hoistway

*Note: Certain equipment and features illustrated or described in this product bulletin are optional at extra cost unless otherwise specified. Some equipment and features may not be available for all models. In keeping with its policy of continuous product improvement, Bramalea Elevator reserves the right to discontinue or change specifications, models and equipment without notice or obligation.*

## CONTACT

[sales@bramaleaelevator.com](mailto:sales@bramaleaelevator.com)

**BRAMALEA ELEVATOR LTD.**  
2500 Williams Pkwy., Unit 33  
Brampton, ON L6S 5M9  
Canada

**Phone: (905) 792-1360**  
**Fax: (905) 792-6752**

Distributed by: