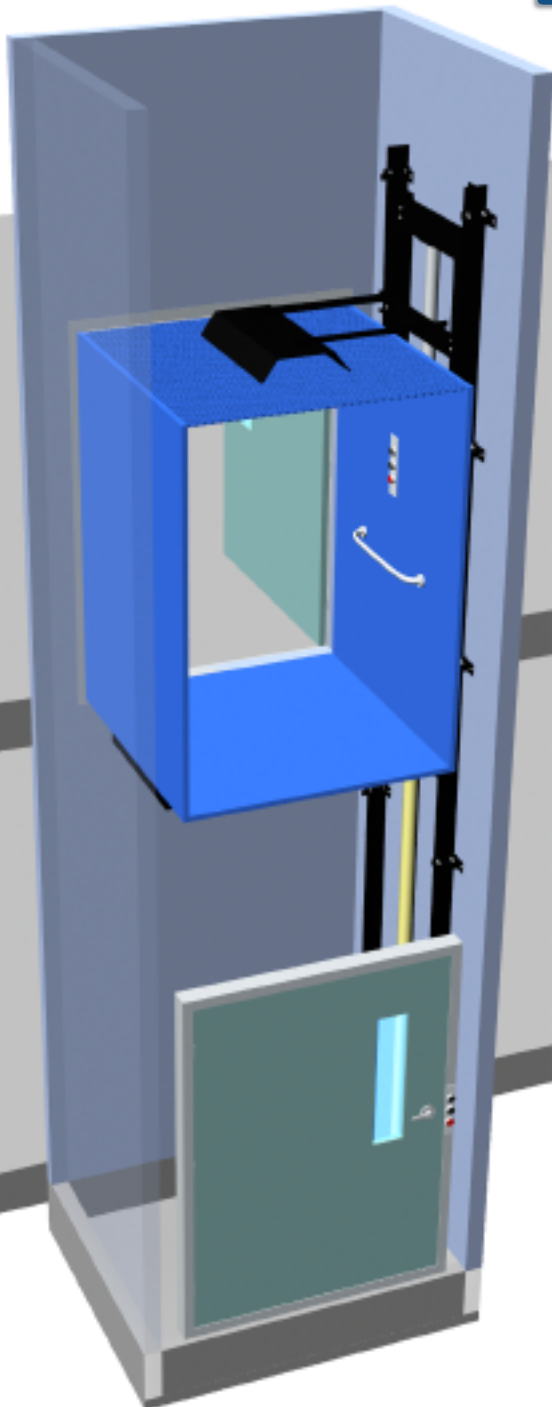
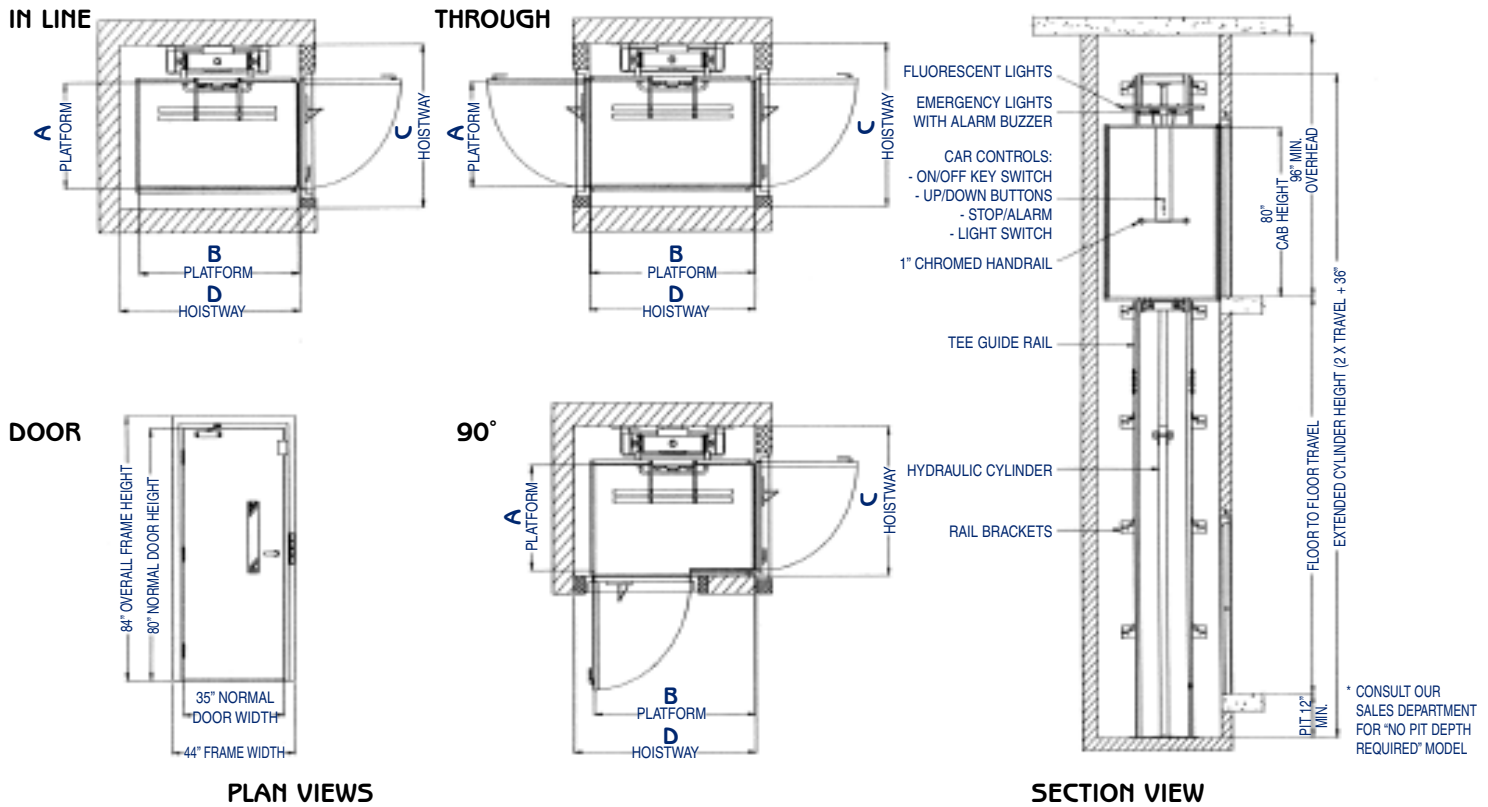


## ENCLOSED VERTICAL PLATFORM LIFTS



- economical alternative to passenger elevator
- carries a person in a wheelchair with an attendant
- environmentally friendly non-buried cylinder
- travels up to 7 metres
- meets or exceeds elevator safety standard B355



PLAN VIEWS

SECTION VIEW

VPL	ENTRANCES	A	B	C	D
36 x 60	IN LINE	876 (34.5)	1524 (60)	1372 (54)	1676 (66)
36 x 60	THROUGH	876 (34.5)	1524 (60)	1372 (54)	1549 (61)
36 x 60	90°	876 (34.5)	1524 (60)	1372 (54)	1676 (66)
48 x 60	IN LINE	1181 (46.5)	1524 (60)	1725 (68)	1676 (66)
48 x 60	THROUGH	1181 (46.5)	1524 (60)	1725 (68)	1549 (61)
48 x 60	90°	1181 (46.5)	1524 (60)	1725 (68)	1676 (66)
36 x 89	IN LINE	876 (34.5)	2262 (89)	1372 (54)	2412 (95)
36 x 89	THROUGH	876 (34.5)	2262 (89)	1372 (54)	2287 (90)

Dimensions tables refer to plan views. All measurements given in mm (inches).

# SPECIFICATIONS

- Design:** cantilevered platform with direct coupled hydraulic cylinder. Two 'T' type guide rails with sliding shoes
- Capacity:** 454 - 1136 Kg (1000 - 2500 lb)
- Speed:** 0.15 M/sec (30 ft/min) maximum
- Travel:** 7.0 metre (23') maximum
- Operation:** key controlled continuous pressure pushbuttons
- Power unit:** 3 HP, 208, 460 or 575/3/60 or 230/1/60 TEFC motor, submersed gear pump, single speed valve
- Car construction:** walls on non-access sides are 2032 mm (80") high x 13 mm (0.5") thick melamine panels on a tubular steel framework; panel trim and control panel are anodized clear alum; a 25 mm (1") chrome handrail is provided on one sidewall; the floor is 3 mm (0.125") painted steel checker plate; the ceiling consists of 13 mm (0.5") egg crate plastic panels; above the ceiling are two 40W fluorescent lights, emergency lights and alarm buzzer
- Hoistway doors:** 1-3/4" hollow metal manual swing doors, 1.5 hr. rated; heavy duty ball bearing hinges (3 per door); interlocked so lift will not operate if door is open and door can not be opened unless platform is at the landing (some jurisdictions restrict the use of swing doors)
- Options:** Telephone cabinet; emergency power for lowering; 2-stage hydraulic cylinder; two speed valve; vane or screw pump; lockable power unit enclosure; solution for habitable space below hoistway

*Note: Certain equipment and features illustrated or described in this product bulletin are optional at extra cost unless otherwise specified. Some equipment and features may not be available for all models. In keeping with its policy of continuous product improvement, Bramalea Elevator reserves the right to discontinue or change specifications, models and equipment without notice or obligation.*

# CONTACT

[sales@bramaleaelevator.com](mailto:sales@bramaleaelevator.com)

**BRAMALEA ELEVATOR LTD.**  
 2500 Williams Pkwy., Unit 33  
 Brampton, ON L6S 5M9  
 Canada

**Phone: (905) 792-1360**  
**Fax: (905) 792-6752**

Distributed by: