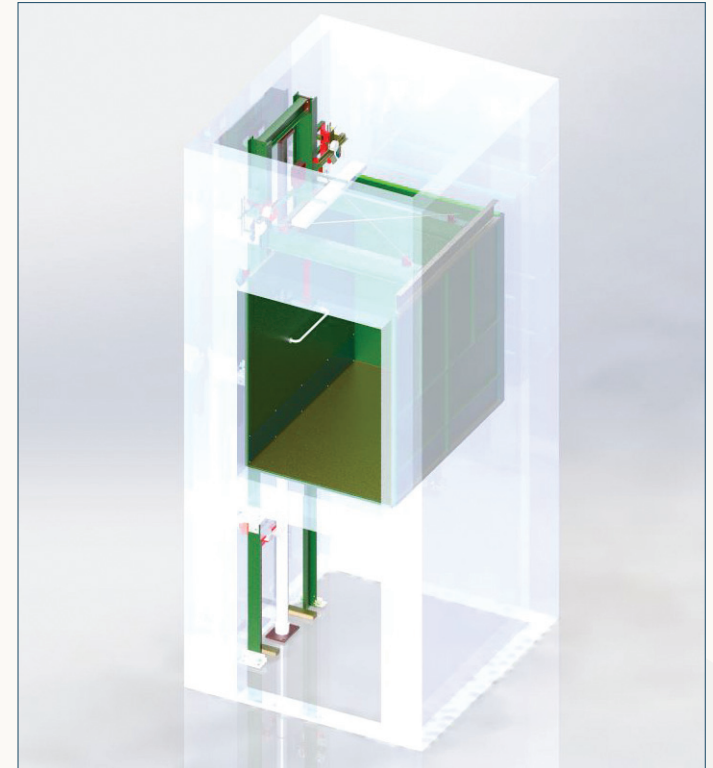


VPL Series - Wheelchair Accessibility Lift

- » Designed for barrier-free accessibility of two or more levels
- » High quality, cost saving alternative to a Passenger Elevator
- » Design solutions for limited overhead and pit depth
- » Environmentally friendly, non-buried, hydraulic cylinder drive system
- » Exceeds elevator safety code standards CSA B355



Specifications:

Design Guarantee

- » Painted steel checkered floor plate to provide a non-skid surface.
- » Mesh ceiling with lighting overhead.
- » Superior ride quality that is smooth and vibration-free with minimal noise concerns.
- » Will pass all stipulated deflection tests.
- » Emergency alarm bell and emergency lighting.

Pumping Unit and Controls

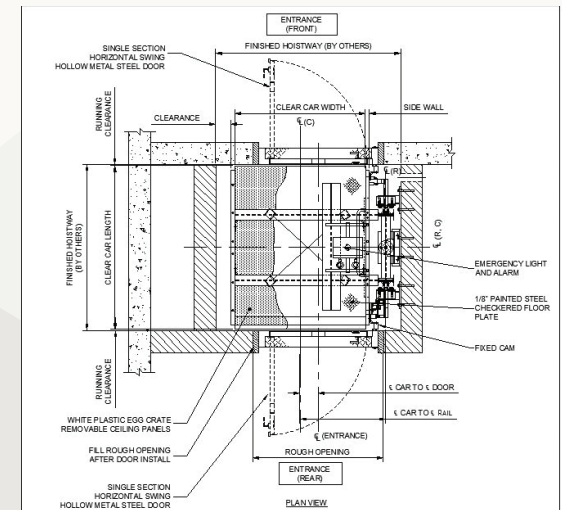
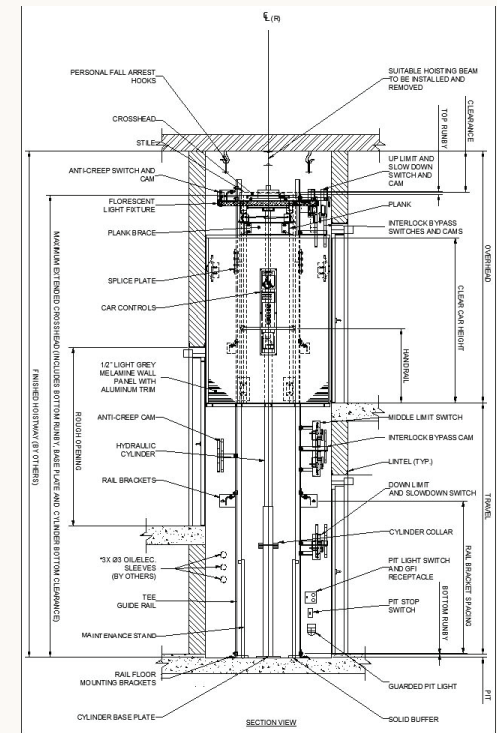
- » Submersible gear pump, totally enclosed, fan cooled motor.
- » Manual shut off valve, and manual lowering valve.
- » 2-Speed valve controls to provide soft starts and stops.
- » 2-way leveling feature allows the lift to re-adjust for leveling accuracy.
- » Power requirements are 208V/230V/460V/575V, 3-phase 60Hz.
- » Continuous pressure push button controls.
- » Emergency stop button is included.
- » Keyed switch to secure against unauthorized use of the controls.

Doors

- » Heavy duty, hollow metal steel doors, manual swing with 1.5hr fire rating and heavy duty ball bearing hinges.
- » Electrical-mechanical interlocking so that elevator will not operate if door is open.
- » In-line or through cab entrances available.

Optional Features:

- » Emergency communication device.
- » Battery operated emergency power for lowering.
- » Submersible motor to reduce noise.
- » Lockable enclosure for power pack & controller when a designated machine room is not available.
- » Design solutions for habitable space below hoistway, restrictions in overhead space or pit depth (ask about our no-pit option).
- » Various solutions for ambient conditions (low temperatures, moisture etc).



THROUGH CAB DESIGNS SHOWN HERE

Free standing, self-supported hoistway can be provided, factory assembled to reduce on-site install time, and requires no structural modifications to the existing facility

