

# ML Series - Hydraulic Material Lift

- » Rider permitted and designed to carry freight and other material between multiple levels
- » High quality, cost saving alternative to a Freight Elevator
- » Weight capacity range from 1,000lb to 20,000lb and above
- » Environmentally friendly, non-buried, hydraulic cylinder drive system
- » Exceeds elevator safety code standards CSA B44 & ASME A17.1



# Specifications:

## Design Guarantee

- » Painted steel checkered floor plate to provide a non-skid surface.
- » Heavy duty sheet steel wall panels with reinforced lower kick plates.
- » Superior ride quality that is smooth and vibration-free with minimal noise concerns.
- » Will pass all stipulated deflection tests.

## Pumping Unit and Controls

- » Submersible gear pump, totally enclosed, fan cooled motor.
- » Manual shut off valve, and manual lowering valve.
- » 2-Speed valve controls to provide soft starts and stops.
- » 2-way leveling feature allows the lift to re-adjust for leveling accuracy.
- » Power requirements are 208V/230V/460V/575V, 3-phase 60Hz.
- » Continuous pressure push button controls.
- » Emergency stop button is included.
- » Optional keyed switch to secure against unauthorized use of the controls.

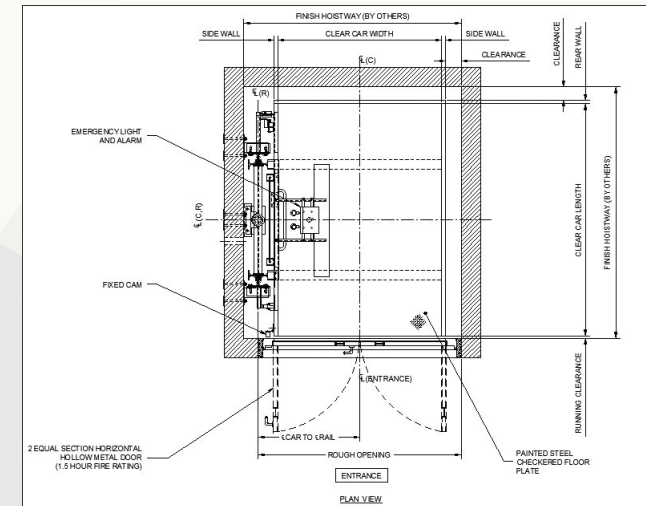
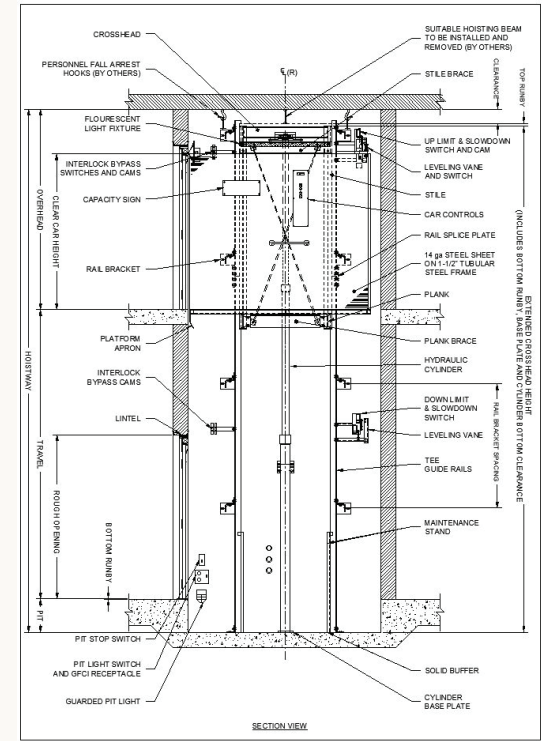
## Doors

- » Heavy duty, hollow metal steel doors, manual swing with 1.5hr fire rating and heavy duty ball bearing hinges.
- » Electrical-mechanical interlocking so that elevator will not operate if door is open.
- » In-line or through cab entrances available.

## Optional Features:

- » Alarm bell and emergency lights.
- » Emergency communication device.
- » Battery operated emergency power for lowering.
- » Submersible motor to reduce noise.
- » Lockable enclosure for power pack & controller when a designated machine room is not available.
- » Manual or Power operated vertical sliding or bi-parting doors.
- » Increase in entrance height for oversize loads.
- » Design solutions for habitable space below hoistway, restrictions in overhead space or pit depth (ask about our no-pit option).
- » Various cab finishes.
- » Various solutions for ambient conditions (low temperatures, moisture etc).

\*\*Free standing, self-supported hoistway can be provided, factory assembled to reduce on-site install time, and requires no structural modifications to the existing facility\*\*



INLINE ENTRANCES DESIGN SHOWN HERE

